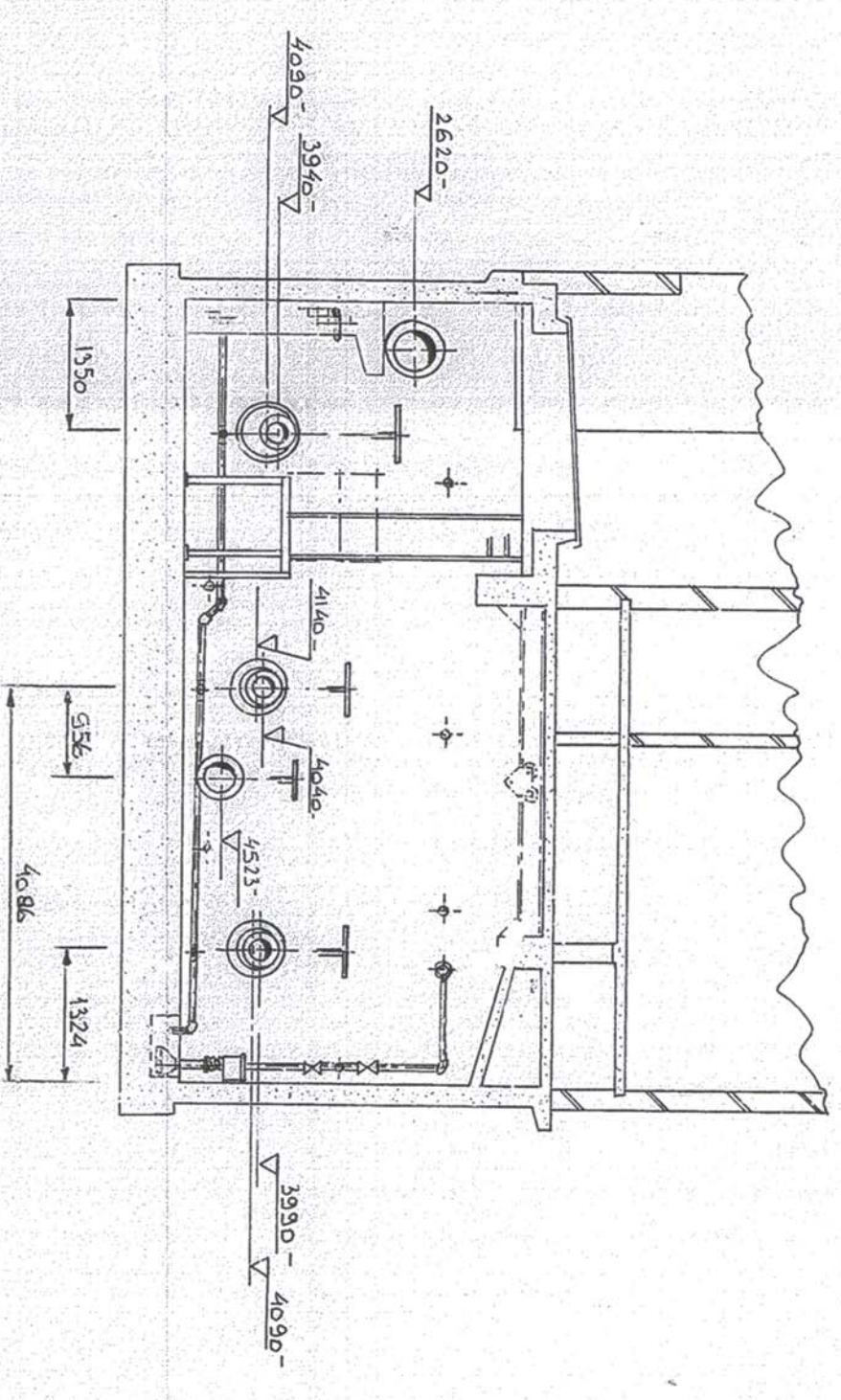
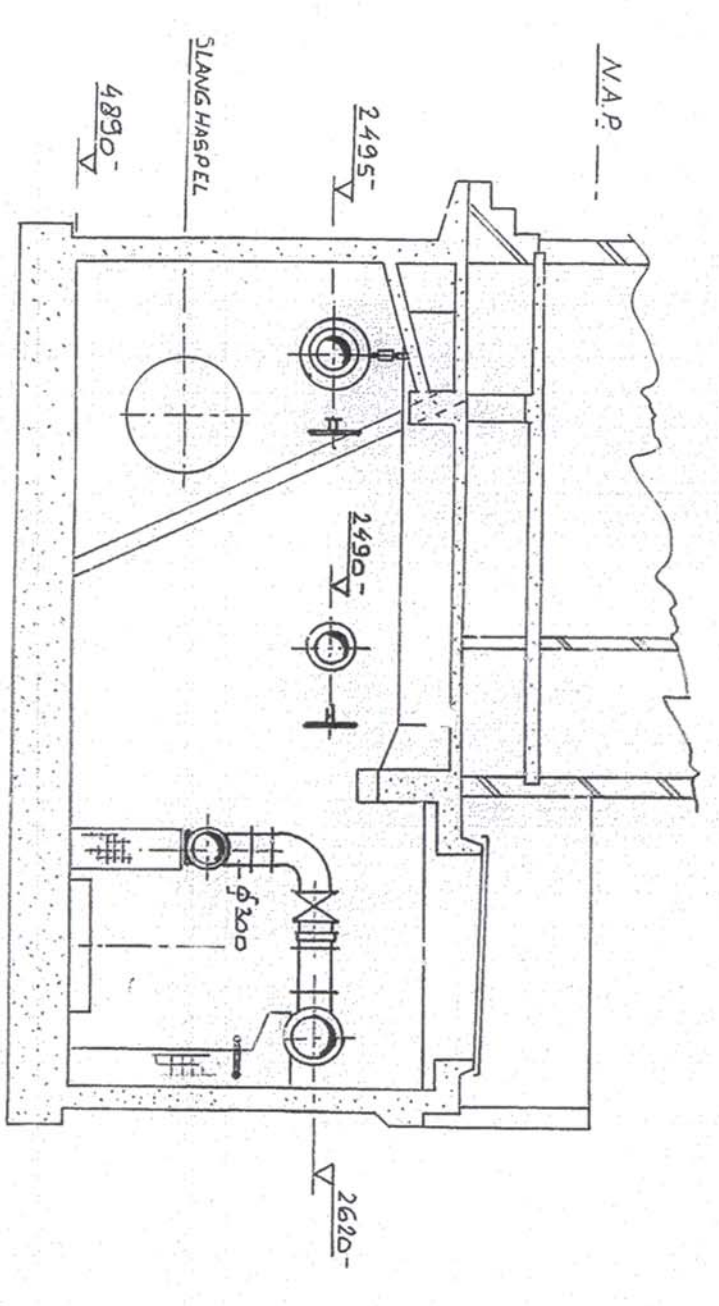
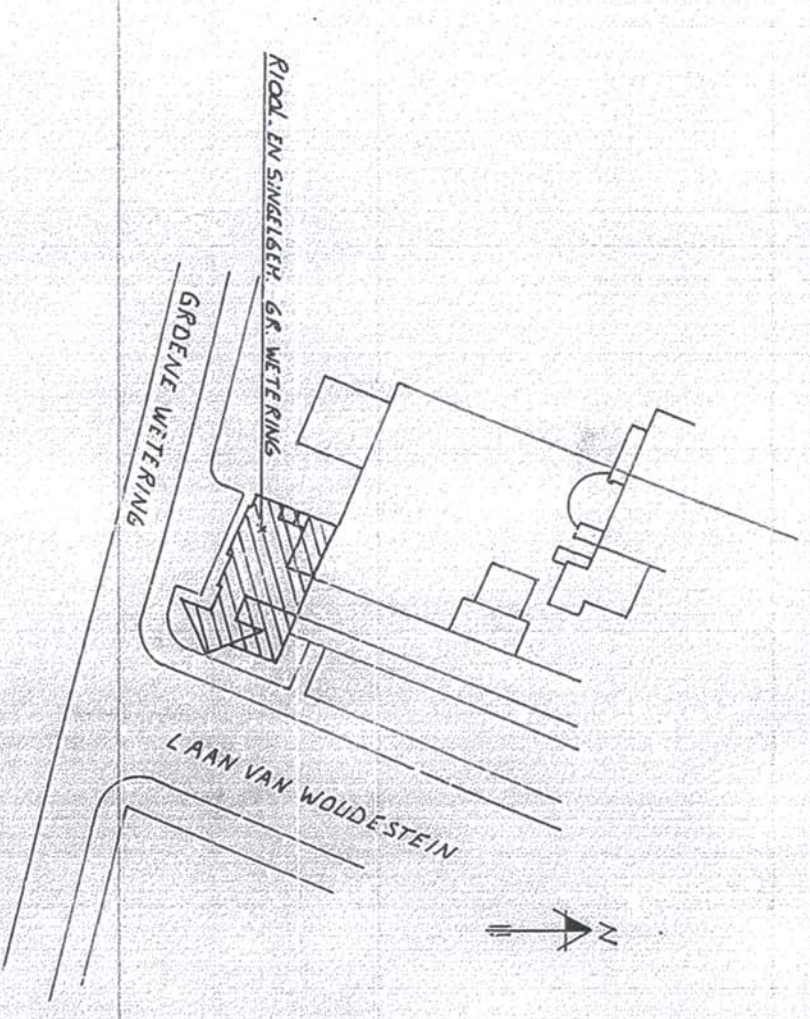
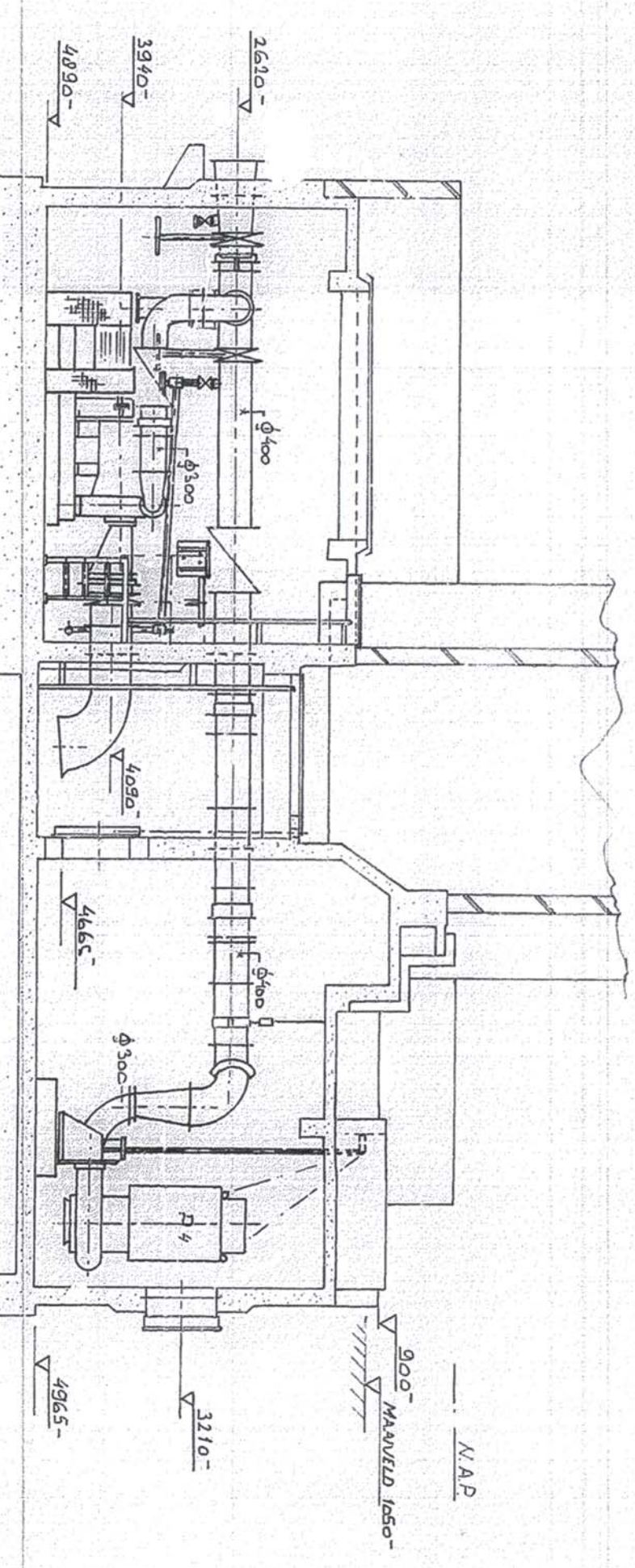
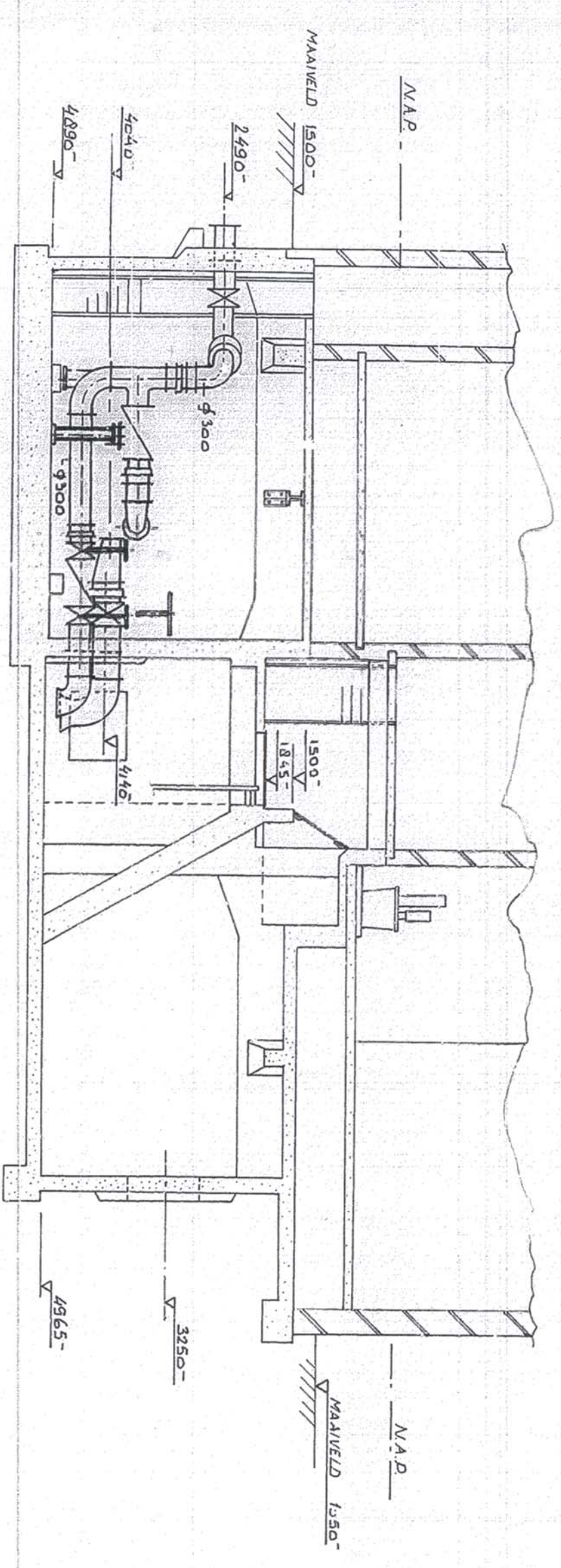
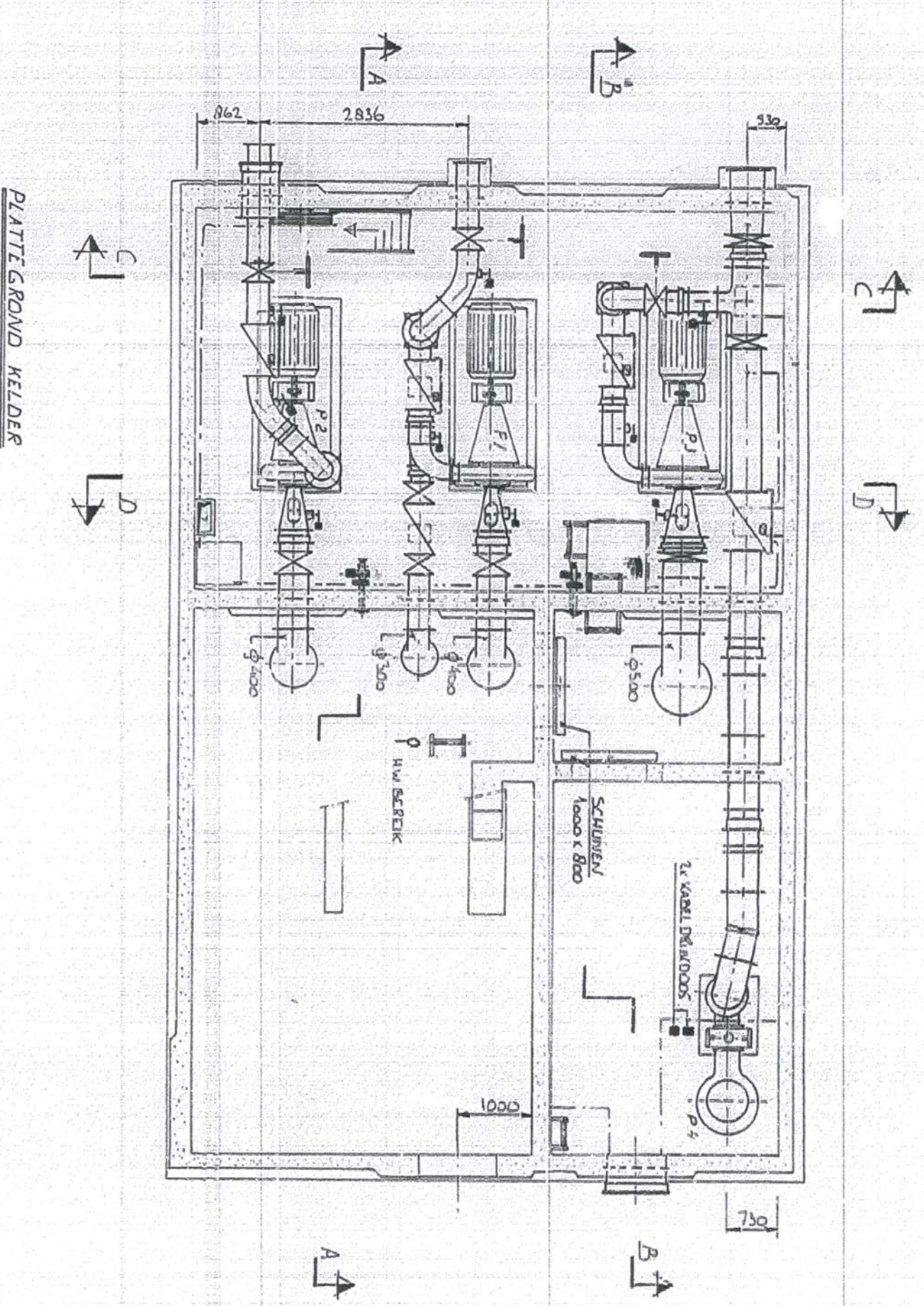
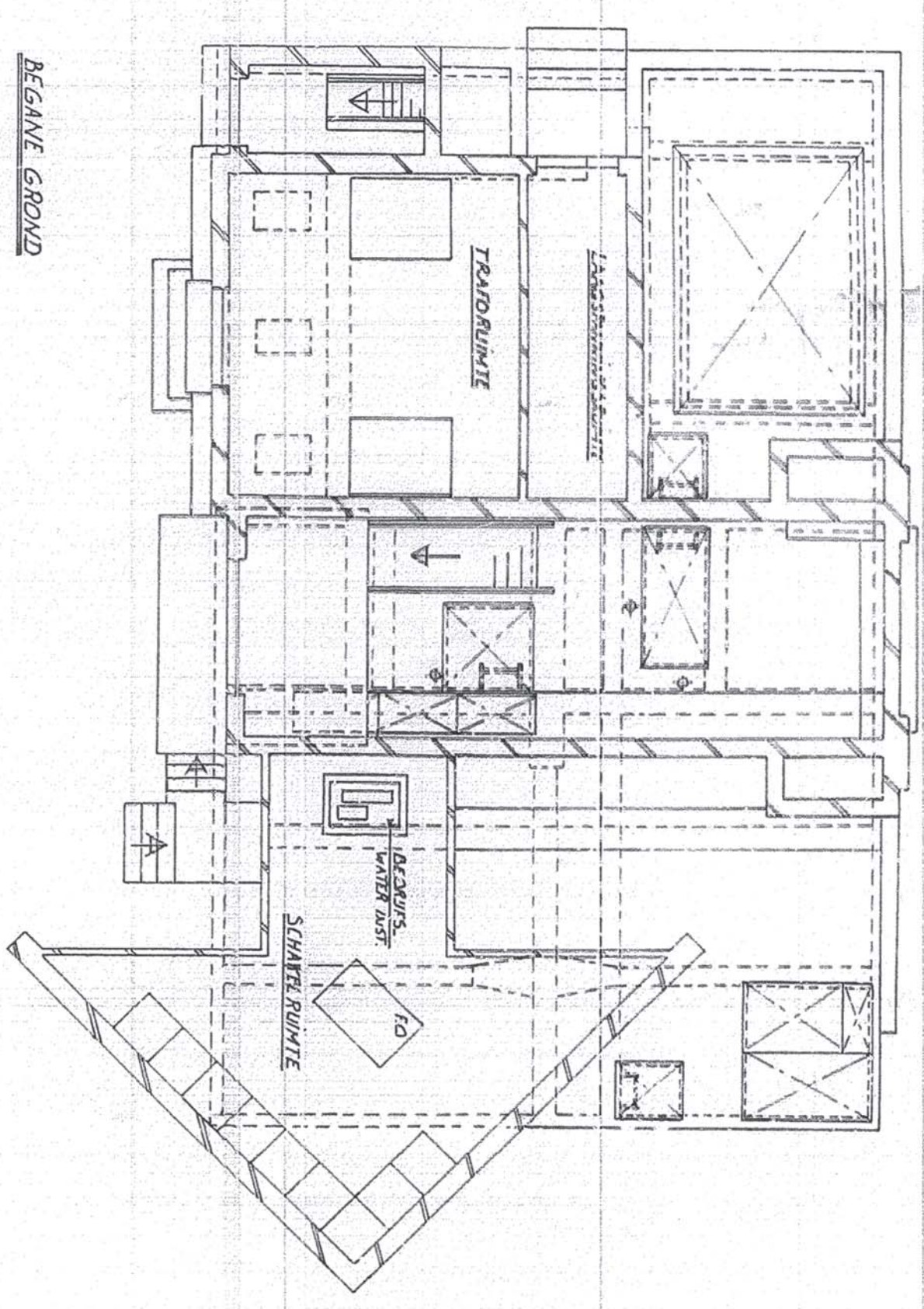


| REVISIONS | | ZOKE |
|-----------|-----------|------|
| A | MAKESHEET | |
| B | | |
| C | | |
| D | 3rd BUILD | |
| E | | |
| F | | |
| G | | |
| H | | |
| I | | |
| J | | |
| K | | |
| L | | |
| M | | |

TEK ARCHIEF
PORT 740
No. 429
GEMWERKEN ROAM



TEK A.D.I.-8 G.W. N° 7287-27
"REVISIE"

VEROLME IJSEL MONDE B.V.
ENGINEERING WORKS AND FIELD CONSTRUCTION
RIOOL-EN SINGELGEMAAI GROENE WETTING
POMPSTELLING

| NAME | DESIGNED BY | CHECKED BY | DATE | SCALE |
|--------------------------|--------------------------|--------------------------|--------------------------|--------------------------|
| VEROLME IJSEL MONDE B.V. | VEROLME IJSEL MONDE B.V. | VEROLME IJSEL MONDE B.V. | VEROLME IJSEL MONDE B.V. | VEROLME IJSEL MONDE B.V. |